

Soch tarakki ki

FULLY FUNCTIONAL 1 BHK & 2 BHK HOMES



ABOUT OXIRICH GROUP

Oxirich Group is a Real Estate Company founded in 2006 with the single minded vision of making aspirational housing affordable. In a journey of more than a decade, the organisation has dedicated to delivering high functional homes at the right value, location and a commitment to quality and timelines. Under the pragmatic leadership of experienced stakeholders, Oxirich has cultivated a culture of excellence and efficiency with a personable quality that has made the brand relatable to its customers and people.

DELIVERED PROJECTS



ONGOING PROJECTS



UPCOMING PROJECTS



ABOUT SUNSKRITI-II

Being at the epicentre of a booming economic and social hub, this project was intelligently envisioned with the foresight of what was to come. Bhiwadi is now the hot spot for many Blue-Chip companies, which places Sunskriti-II right in the middle of ongoing development. This gated community offers all the modern day amenities to people for a comfortable living, it offers an lifestyle upgrade for the surrounding areas and a brilliant investment opportunity for people in their aspiration to grow. Oxirich Sunskriti-II Bhiwadi is the perfect setting for a growth mindset and a peaceful comfortable living away from the crowd and pollution of the capital city, yet at the heart of development.



Rapid Rail Transit System RRTS



Industrial Hub



Upcoming Cargo Airport

Our Esteemed Clientele



Our Bankers



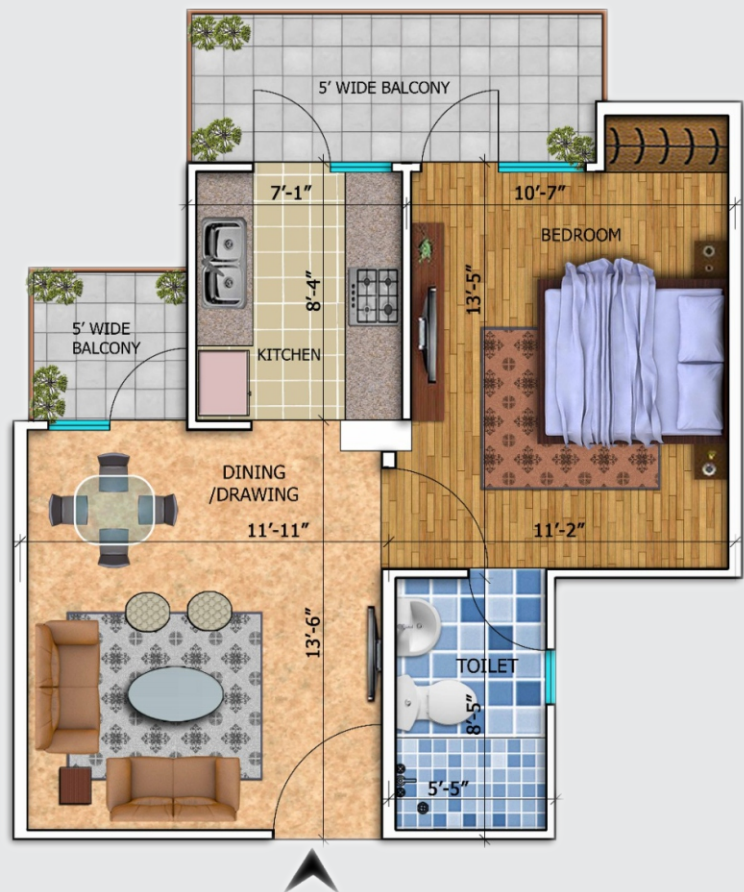
Site Map

Common Facilities for the whole project

1. Entry / Exit
2. Landscaped Garden
3. Senior Citizen Park
4. Sand Pit
5. Shopping Zone
6. Club
7. Swimming Pool
8. Badminton Courts
9. Play Ground
10. Tennis Courts
11. LIG / EWS



- Ready for possession ————
- Under construction ————
- Construction soon ————
- Future Construction ————



UNIT PLAN
1BHK
SUPER AREA
653 sq. ft

DIMENSIONS MENTIONED HEREIN INCLUDE THE PROPORTIONATE SHARE OF WALL
WOODEN FLOORING CHARGES EXTRA



UNIT PLAN
2BHK
SUPER AREA
1050 sq. ft

DIMENSIONS MENTIONED HEREIN INCLUDE
 THE PROPORTIONATE SHARE OF WALL
WOODEN FLOORING CHARGES EXTRA



UNIT PLAN
2BHK
SUPER AREA
1099 sq. ft

DIMENSIONS MENTIONED HEREIN INCLUDE
 THE PROPORTIONATE SHARE OF WALL
WOODEN FLOORING CHARGES EXTRA

Legal Note : The Site Plan and Layout Plan is to describe the conceptual plan of Oxirich Sunskriti-II which can be modified as decided by the developer/architect or competent authority in accordance with the applicable laws. The services/facilities/activities shown in the Site Plan and Layout Plan of Oxirich Sunskriti-II can be modified/relocated as decided by the developer/architect or competent authority in accordance with the applicable laws.

Specification for Oxirich Sunskriti - II

Structural Standard

Earthquake resistant foundations & RCC framed structure with Autoclaved Aerated Concrete Block partition wall in accordance to guidelines of NBC.



Flooring

Double charged vitrified tiles for a much longer life & shine in all bedrooms and in all common areas. Anti skid tiles in bathrooms, kitchen & balcony area. Combination of natural stone allied products for aesthetic appeals in common lobby & staircase area.

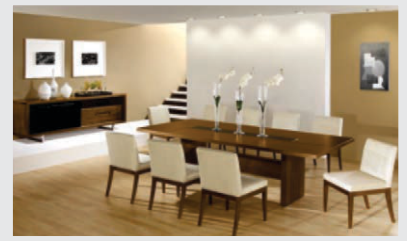


Electrical

Modular switches & copper insulated wiring as per industry specification.

Wall Finishes

- * Pleasant shades of OBD in bedrooms & living area
- * Glaze ceramic tiles bathrooms upto shower height
- * 2 feet glazed dado above kitchen slab



Kitchen

- * Stainless steel sink with drain board
- * Polished granite counter platform
- * Provision for hot & cold water

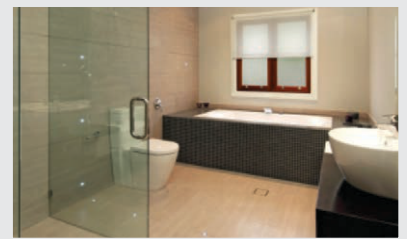


Security System

- * Gated 2 tier Security system
- * CCTV surveillance with in the entire complex area

Access

Hi-speed elevators with wide stair cases for each wing of individual towers



Doors & Windows Frames

- * Designer panel / flush / laminated doors
- * External glazing in 5mm thick clear float glass embedded in wooden/aluminium/UPVC Frames

Power Backup

- * Silent DG sets to provide 100% backup for all common facilities including elevators
- * Adequate power backup for apartments as per desired requirement on request



With Amazingly Refreshing Amenities

Oxirich Sunskriti² is one of the most urban & elegant adobes crafted for life with enough open spaces and landscaping to give you the fresh breath for holistic living. Offering true world-class amenities and facilities like the club house where in you can enjoy a lazy evening or have a ball with your friends.



Landscaped Garden



Swimming pool



Toddlers Play Area



Gymnasium



Club House



Shopping Zone



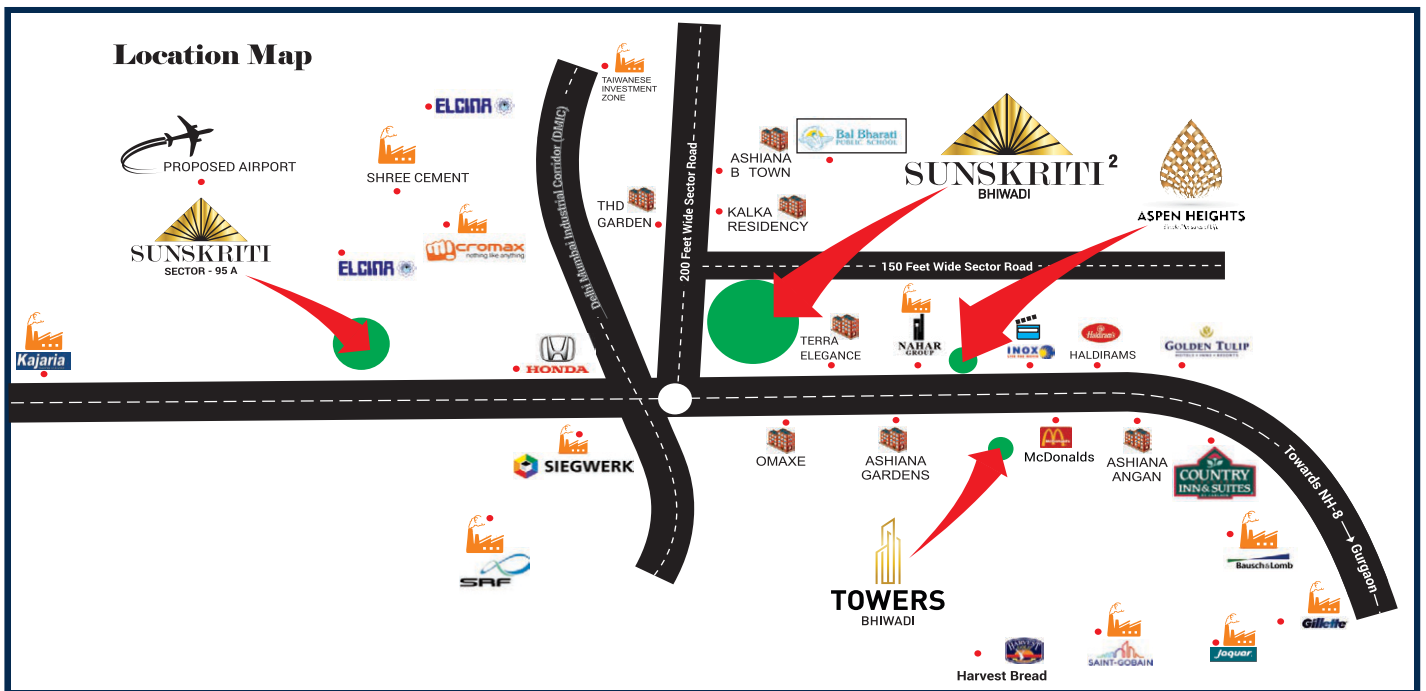
Badminton Court



Table Tennis Court

Ideally Located in the Heart of Bhiwadi

- Work in Delhi/Gurugram, Live in Bhiwadi
- Rapid Metro from Delhi to Bhiwadi (25 Minutes)
- 30 minutes drive from Gurugram & 50 minutes from IGI Airport
- More than 1,00,000 families are part of Bhiwadi Urban City
- Close to Banks, Schools, Hospitals and Shopping Malls, Multiplex, Hypermarket in close proximity



Oxirich Realtors Pvt. Ltd.

(Renamed from City Lifespaces Pvt. Ltd.)

A Joint Venture of



A Patron Member of
National Real Estate Development Council
Under the Aegis of Ministry of Housing & Urban Poverty Alleviation
Government of India

Corp. Office : 1120, 11th Floor, Arunachal Building,
Barakhamba Road, Connaught Place, New Delhi-110001

Cont. Nos.: 9811134222, 9811713152

Web. : www.oxirich.com | E-mail : info@oxirich.com

CIN : U45204DL2012PTC234067 | RERA No. : RAJ/P/2017/128

Disclaimer: This does not constitute a legal offer. All site plans, layout plans, areas, dimensions and specifications etc. are subject to change till final completion of the project. Soft furniture and gadgets are not part of the offering. All images are an artistic conceptualization and do not purport to replicate the exact products.